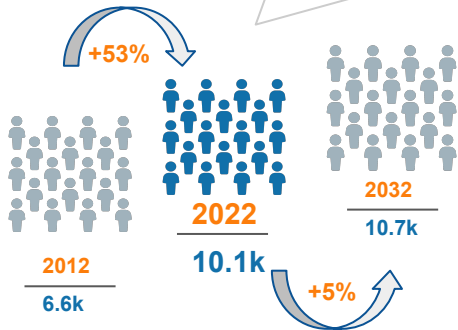


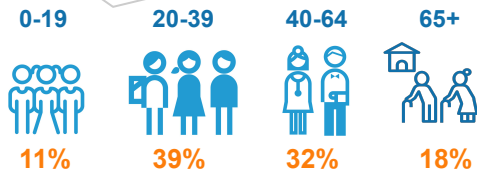
Population in City of London



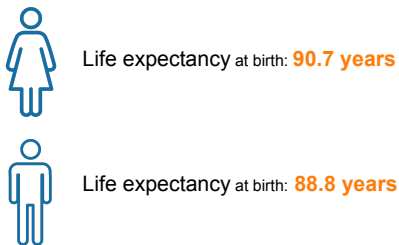
The past ten years has seen a notable population increase, but the rate of growth is expected to reduce by more than ten times in the next ten years. Daily, an additional estimated 513,000 people work in the City.



The majority of **City of London's** population is composed by working age adults, around **71%** residents aged 20-64, compared to 64% in **London**.



Life expectancy (LE) in **City of London** is **better** than in **England**. However the gap between male and female remains.



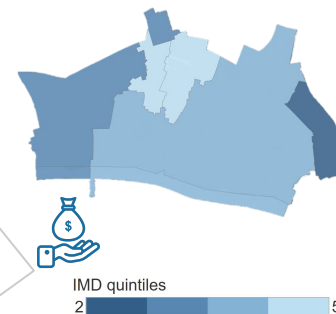
Around **24%** of **City and Hackney** adult (18+) population have 2 or more **long term conditions**.



The **City** is among the least deprived areas in England, ranking **126 out of 151** local authorities, where 1 corresponds to the most deprived.

Around **7%** of children under 16 and **8%** of all adults aged 60+ live in low income households.

In the map opposite, where the darker blue areas are the most deprived, shows that **Porksen** is the most deprived area within the City.

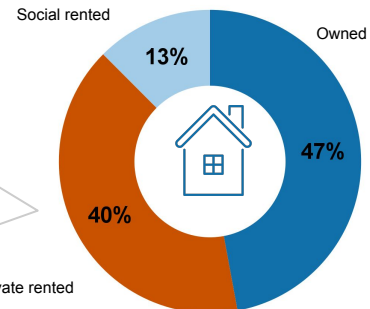


Long term claimants of **Jobseeker's Allowance (2021): 1.2 per 1,000 population**



London: 2.3 per 1,000
England: 2.1 per 1,000

As **City** have small numbers, it's not possible to see significant difference in unemployment conditions compared to **London** and **England**. It ranks 10 among the 33 areas in **London**.



The proportion of **private and social rented tenures** in the **City** was **53%**, compared to 50% in **London** in 2020.

